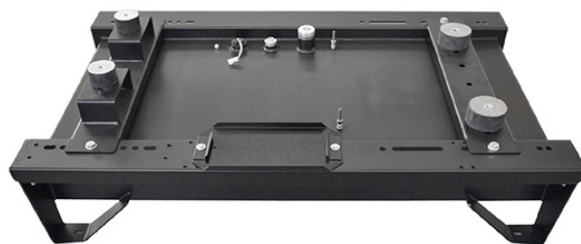


## MAIN FEATURES

Open version generating sets in the Powerfull B series are made with the new T-type baseframe that guarantees the generating set with an operating autonomy of at least 8 hours at 75% of the PRP power (the operating autonomy varies according to the installed power and baseframe size). The frames are divided into 4 sizes with uniform dimensions, called T 1- T 2 - T 3 - T 4. For every size of trailers, different models of generating set can be mounted, according to their power, to engine and alternator brand name.



## DESCRIPTION

### CONSTRUCTION FEATURES

The frames are made of S235JR quality or higher steel sheet metal, and are assembled by welding carried out by skilled workers. In addition to supporting the coupling, the baseframe also acts as a tank. For this reason every piece that is built is then subjected to pressure so as to test the seal of the welded seams.

### SOLUTIONS

The top part of the tank is shaped so as to serve as a retention basin for any dripping during normal filling and maintenance operations. The baseframe is fitted with supporting feet to keep it raised off the floor and therefore allow the generating set to be handled with a fork lift. There are slots on the supporting feet so that the baseframe can be secured to the floor.

### PAINTING

Each component has a powder-coated thermoset paint containing a polyester resin base highly resistant to atmospheric agents; the pigments are stable against light and heat. The painting process is preceded by a phospho-degreasing cycle with a demineralised water rinse and then dried. Minimum paint thickness is 70 micron. After the powder-coated paint is applied, the component is kept in the oven until polymerisation is complete. RAL 9005 (black) is the standard colour. Other colours are available on request.

### INSTALLATION

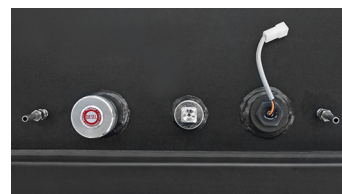
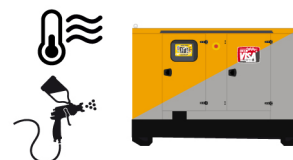
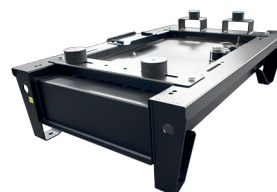
Crossbeams fitted with fuel and lubricant-resistant vulcanised rubber anti-vibration mounts are bolted onto the baseframe and sized so as to support the engine/alternator coupling and damper vibrations at no less than the values provided in table C1 of Standard ISO8528-9.

### EQUIPMENT

T-series frames are all equipped with the following accessories:

- filler cap;
- electric fuel level gauge;
- sleeves for the automatic loading system connection;
- connecting sleeves for the engine power supply circuit;
- bottom plugs to empty and clean the tank.

## PICTURE



## OPTIONAL ACCESSORIES

-Colours and oversize capacities on request.