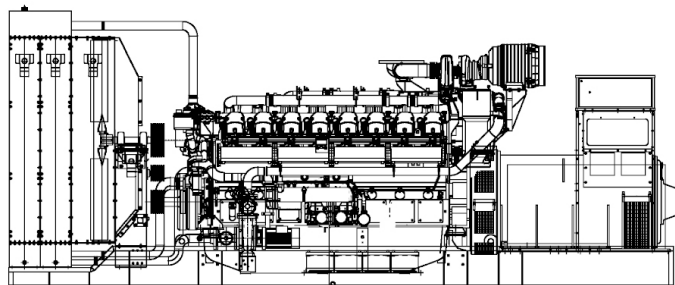




## POWERFULL "U"



For illustrative purposes only

### ENGINE

Description	PERKINS
Engine model	4016-61TRG3
Cylinders	16
RPM speed	1500
Cubic capacity	61.12 l
Air intake	Turbocharged
Standard voltage	24 Vdc
Optional voltage	Vdc
Sae	00-18
BMEP	2585 kPa
Cooling	Water
Flywheel P.R.P. Power net	1876.0 kW
Flywheel Stand-by Power net	2084.0 kW
Fuel Cons. at 100% (L.T.P.)	529.0 l/h
Fuel Cons. at 100% (P.R.P.)	470.0 l/h
Fuel Cons. at 75% (P.R.P.)	344.0 l/h
Fuel Cons. at 50% (P.R.P.)	234.0 l/h
Fuel Cons. at 25% (P.R.P.)	126.0 l/h
Electronic regulator	Standard
Precision class	G3
Oil quantity	238.0 l
Engine Antifreeze capacity	95.0 l
Radiator type	TE
Heat from radiator	1580.0 kW
Heat from exhaust	1535.0 kW
Heat from radiation	160.0 kW
Exhaust temperature	560 °C
Portata Raffreddamento	2667.0 m³/min
Combustion air flow	175.0 m³/min
Exhaust gas flow	525.0 m³/min
TA Luft	N
TA Luft/2	N
EPA	N
Stage	N

### MAIN DATA

Continuous power (PRP)	<b>2250.00</b> kVA
Continuous power (PRP)	<b>1800.00</b> kW
Stand-by power (LTP)	<b>2400.00</b> kVA
Stand-by power (LTP)	<b>1920.00</b> kW
VAC - HZ - cos(fi)	<b>380 - 50 - 0.8</b>

### DIMENSIONS AND WEIGHT

Width	2150 mm
Length	6050 mm
Height	2550 mm
Weight	16250 kg

### ALTERNATOR

Description	STAMFORD
Alternator model	S7L1D-H
P.R.P. Power	2250 kVA
L.T.P. Power	2400 kVA
Connection	Star
Phases	3FN
Winding	312
Terminal Number	6 nr.
IP Protection	23
Electronic regulator	MX341
Precision	1 ± %

### BASEFRAME

Model	ST60
Standard tank	0 l
Optional tank	0 l
Oversized tank*	0 l

### CANOPY & SILENCER

Canopy model	SENZA COFANO
Silencer model	----
Silencer outlet diameter	0 mm

Standard reference conditions temperature 25°C, altitude 100m asl, relative humidity 30%, atmospheric pressure 100 kPa (1 bar), power factor 0.8 lag, balanced load - non distortional. Fuel consumption is nominal and refers to specific weight 0.850kg/l. Sound power values refer to free field conditions: the installation site may influence the values. Dimensions, weights and other specifications contained in the technical data sheet and related attachments are nominal, subject to tolerances and refer to the model with standard equipment; any optional and additional equipment/accessories can modify weight, dimensions, performance.

**P.R.P. Prime Power-Continuous power at variable load:** The power that a genset can supply in continuous service at a variable load for an unlimited number of hours per year while respecting the maintenance intervals established in the environmental conditions stated by the Manufacturer, according to ISO8528-1. The average power supplied over time and any applicable overload must be less than the percentages stated by the Manufacturer.

**L.T.P. Limited-time running power-Limited power:** The maximum power that a genset can supply for a limited time respecting the maintenance intervals established in the environmental conditions stated by the Manufacturer according to ISO 8528-1. The number of hours per year is stated by the Manufacturer. Overload is not permitted.

The data contained in this document is nominal and refers to the standard equipped model and is not binding. Visa S.p.A. reserves the right to revise the information without notice per our policy of continuous product development and improvement.

