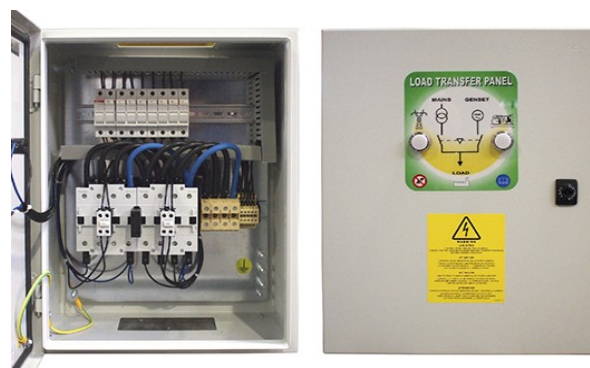


## MAIN FEATURES

ATS-C is a new line of changeover switch panels developed and produced by Visa S.P.A. in accordance with IEC standards EN 61439-2 (construction standard) for powers up to 125°. In their specific use with generating sets the changeover switch panels allow the changeover between mains/genset or genset/genset. The main part of the panel is represented by two interlocking contactors. All of the parts are installed inside a sturdy powder-coated (RAL7035) metal box and equipped with a lock to close the access door. IP65 protection guarantees the protection of the parts from external agents.



### DESCRIPTION

All the components are installed inside a powder coated metal case (RAL 7035), complete with lock on the access door.

### PICTURE



### SAFETY EQUIPMENT

The following safety devices are provided as standard:

- Mechanical interlock between the two contactors;
- electrical interlock between the two contactors by means of a state contact;
- protection fuses on the mains presence line;
- protection fuses on the pre-heating power supply line;
- the state of the changeover switch is displayed by a light on the panel door;
- connection terminal block with suitable sizes for the currents in use.

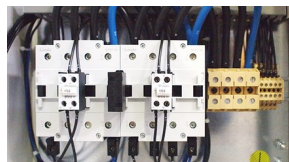
All auxiliary controls are available and clearly identified on a large terminal board; appropriate fuses protect the whole system.



### STRENGTHS

- Sturdy epoxy powder-coated metal box with foamed gasket offering IP65 protection
- Contained overall dimensions

Interlocking pair of contactors and terminal blocks to connect the mains and genset. All of the ATS-C panels are equipped with sturdy terminal blocks to connect mains and genset power cables.



All Ats-C panels are equipped with sturdy key-locks to close the front panel.



The change-over between the Mains and genset or amongst gensets occurs through the activation of automatic functions on the control panel. The interface on the ATS panel activates or deactivates the switch gear and sends all the necessary informations.

