

**ONIS VISA Zeus Dry Prime****Model: MTZ.F75.SS****MODEL: Dewatering**

ALL PICTURES SHOWN ARE FOR ILLUSTRATION PURPOSE ONLY

**MAIN DATA**

Max. flow	<b>540 m<sup>3</sup>/hour</b>
Max. Max head	<b>33 mwc</b>
Solids handling	<b>76 mm</b>
Suction connection	<b>DN150 PN16</b>
Delivery connection	<b>ANSI 6"</b>
Fuel tank	<b>200 l.</b>

**DIMENSIONS AND WEIGHT**

Width	1185 mm
Length	2386 mm
Height	1787 mm
Weight	1600 Kg (approx)

The **Zeus Dry Prime** range delivers fast dewatering solutions to sites where a power source is not available. Using a Pioneer pump featuring a 100% mechanical priming system, the Zeus Dry Prime motorpumps quickly prime and reprime, even from dry conditions.

**PUMP**

<b>Brand</b>	Pioneer
<b>Model</b>	PP66S10T E0 410
<b>Pump casing:</b> 65-42-12 ductile iron with 280 BHN hardness	
<b>Enclosed impeller:</b> CA6NM Self-hardening Stainless Steel with 13% chromium with 360BHN hardness	
<b>Pump shaft:</b> 1144 Stress-Proof Steel Chromed	
<b>Bearings:</b> Dual angular contact drive end bearings	
<b>Priming system:</b> Mechanically Driven Diaphragm Style vacuum pump	
<b>Air removal capab.:</b>	85 m <sup>3</sup> /h (50 cfm)
<b>Float box:</b> Single chamber with positive sealing air separation. Stainless steel float ball and linkage	
<b>Discharge Check Valve:</b> Swing Style – ductile iron with Buna-n Disc	

**ENGINE**

<b>Brand</b>	FPT Industrial
<b>Model</b>	F32MNSX00.00
<b>Gross Power</b>	55 kW @ 2500 rev/min
<b>Displacement</b>	3,2 l.
<b>N° cylinders</b>	4
<b>Cooling system</b>	Water cooled
<b>Exhaust emission</b>	Stage IIIA

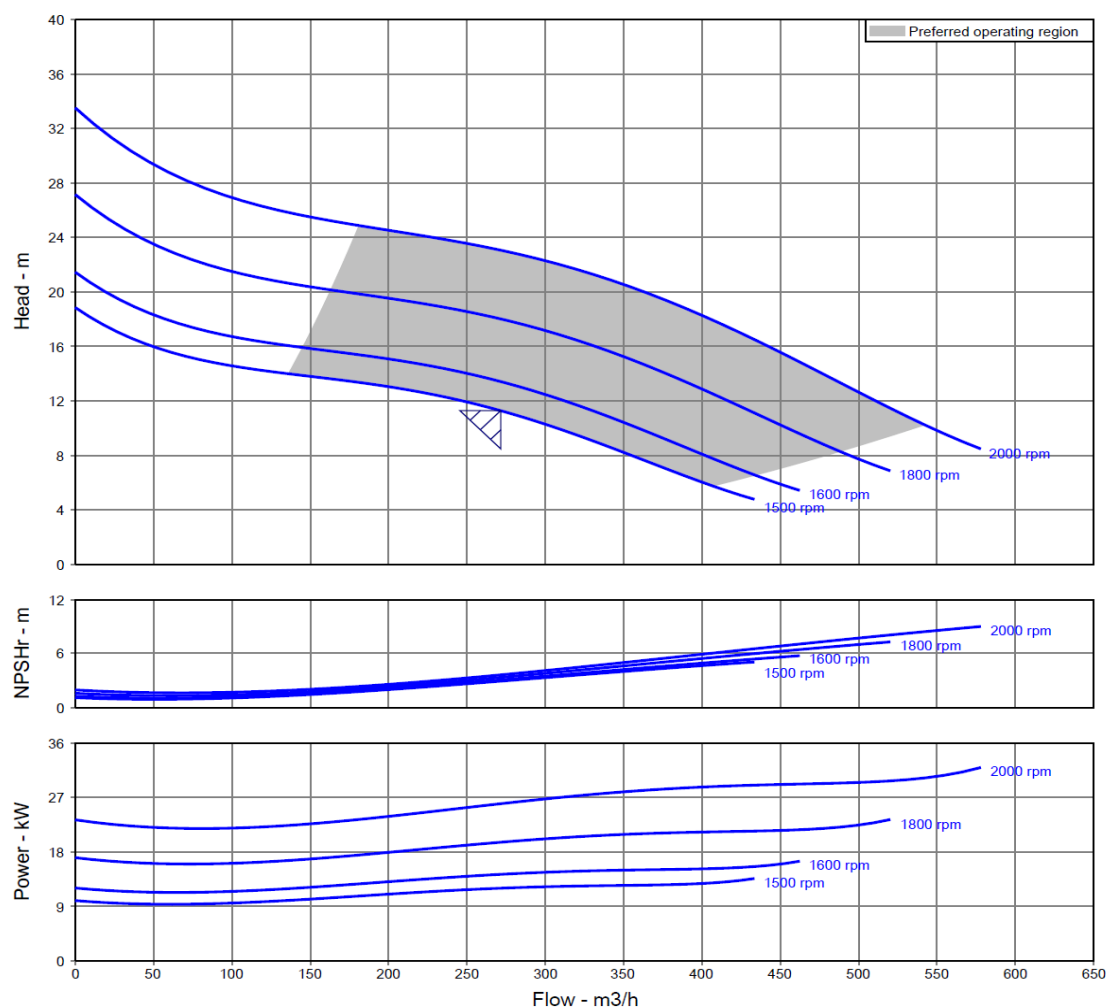
**CONTROL PANEL**Controller model **NT5 by Nettuno**

Auto start/stop system  
Switch manual – 0 – Automatic  
Tachometer  
Hour counter  
Warning lights “oil and engine temperature”  
Warning light “auto stand-by”  
GPRS – VISA Web supervisor & APP  
Geolocation and Geo-fencing  
Soot / Ash filter control  
Two float switches (min/max level) support for automatic operation

The data contained in this document is nominal and refers to the standard equipped model and is not binding. VISA S.p.A. reserves the right to revise the information without notice.

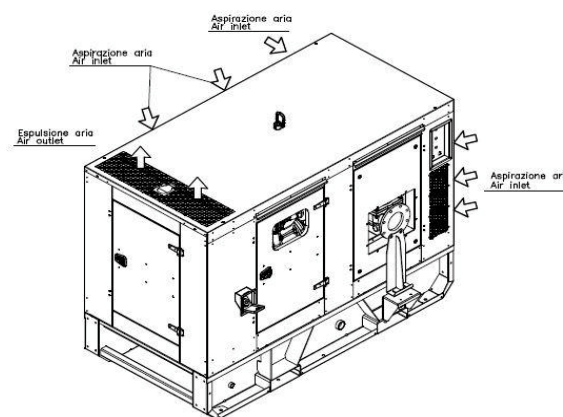
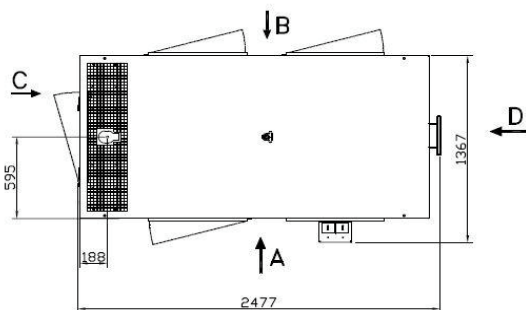
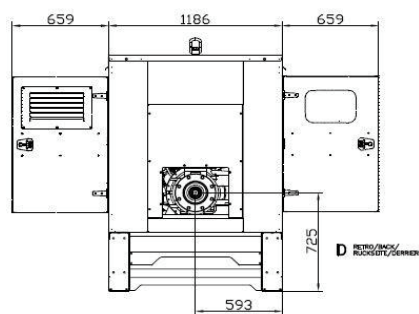
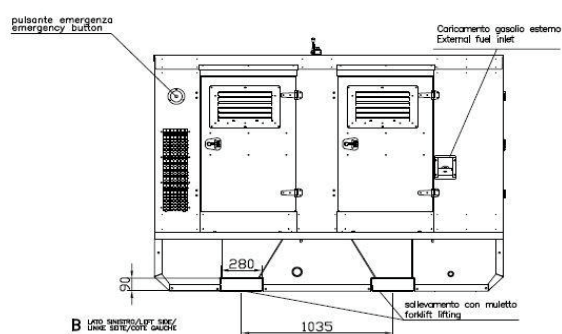
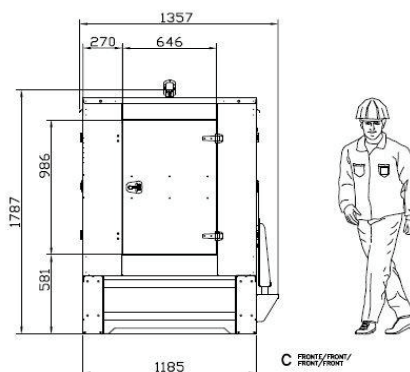
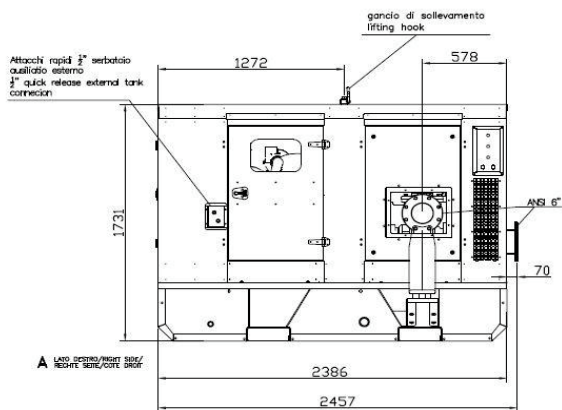
**ONIS VISA Zeus Dry Prime****Model: MTZ.F75.SS****MULTI-SPEED PERFORMANCE CURVE**

**World-class performance:** Using high efficiency pumps and top performance diesel engines, the Zeus Dry Prime units offer high performance and efficiency to ensure predictable and timely job completion with minimal operating expenses



Description	: PP66S10	Speed, rated	: 1500 rpm
Stages	: 1	Based on curve number	: 66S10
Differential head / pressure, rated	: 11.28 m	Efficiency	: 69.34 %
Fluid density, rated / max	: 0.998 / 0.998 kg/dm³	Viscosity	: 1.00 cSt
Power, rated	: 12.01 kW	Cq/Ch/Ce/Cn [ANSI/HI 9.6.7-2010]	: 1.00 / 1.00 / 1.00 / 1.00
NPSH required	: 2.91 m	Impeller diameter, rated	: 241 mm
		Saved Date	: 20 Jan 2022 3:25 AM

The data contained in this document is nominal and refers to the standard equipped model and is not binding. Visa S.p.A. reserves the right to revise the information without notice.

**PRELIMINARY DIMENSIONS**

**Nettuno motorpumps designed & built by VISA SPA • Complete in-house design & production**

- Over 45 years of experience in the motorpumps sector
- In-house extensive testing facility
- Modern & functional design
- Durable materials
- Customizations available

The data contained in this document is nominal and refers to the standard equipped model and is not binding. VISA S.p.A. reserves the right to revise the information without notice.