

ONIS VISA Zeus Dry Prime

Model: MTZ.F126.SS

MODEL: Dewatering



ALL PICTURES SHOWN ARE FOR ILLUSTRATION PURPOSE ONLY

MAIN DATA

Max. flow	804 m ³ /hour
Max. Max head	61 mwc
Solids handling	80 mm
Suction connection	DN200
Delivery connection	DN200
Fuel tank	500 l.

DIMENSIONS AND WEIGHT

Width	1425 mm
Length	2925 mm
Height	2240 mm
Weight	** Kg (approx)

The **Zeus Dry Prime** range delivers fast dewatering solutions to sites where a power source is not available. Using a VISA pump featuring a 100% mechanical priming system, the Zeus Dry Prime motorpumps quickly prime and reprime, even from dry conditions.

PUMP



Brand	VISA
Model	HG200
Pump casing:	Cast Iron G25
Impeller:	Cast Iron GS500 - Type: 2-blade spiral smooth flow open impeller
Pump shaft:	Stainless steel [39NiCrMo3]
Priming system:	Mechanically Driven Diaphragm Style vacuum pump
Air removal capab.:	50 m ³ /h (30 cfm)
Float box:	Single chamber with positive sealing air separation. Stainless steel float ball and linkage
Discharge Check Valve:	Swing Style

ENGINE



Brand	FPT INDUSTRIAL
Model	FPT - 126HP@2200 RPM
Gross Power	93 kW @ 2200 rev/min
Displacement	4,5 l.
N° cylinders	4
Cooling system	Water cooled
Exhaust emission	Stage IIIA

CONTROL PANEL

Controller model NT5 by Nettuno

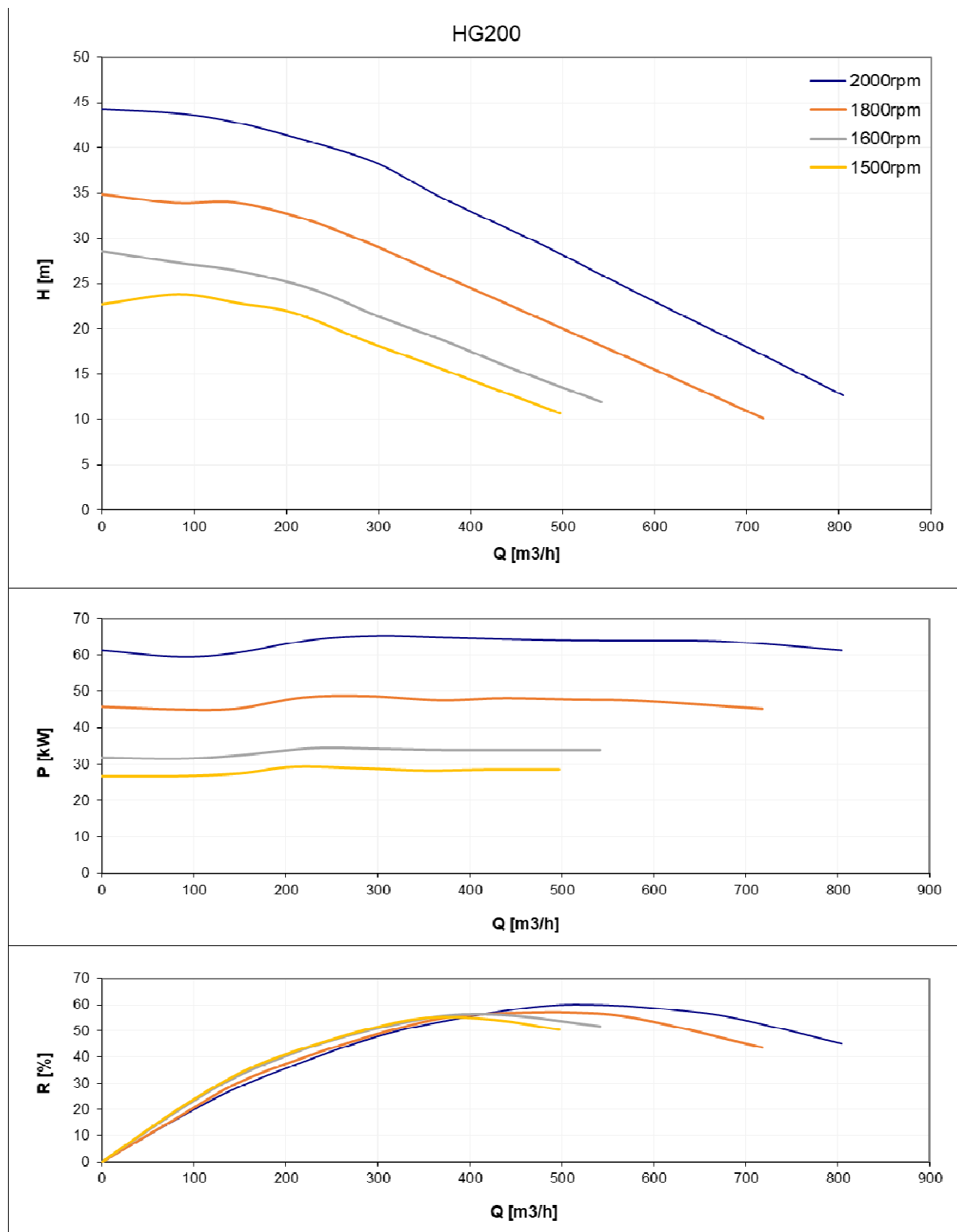


- Auto start/stop system
- Switch manual – 0 – Automatic
- Tachometer
- Hour counter
- Warning lights “oil and engine temperature”
- Warning light “auto stand-by”
- GPRS – VISA Web supervisor & APP
- Geolocation and Geo-fencing
- Soot / Ash filter control
- Two float switches (min/max level) support for automatic operation

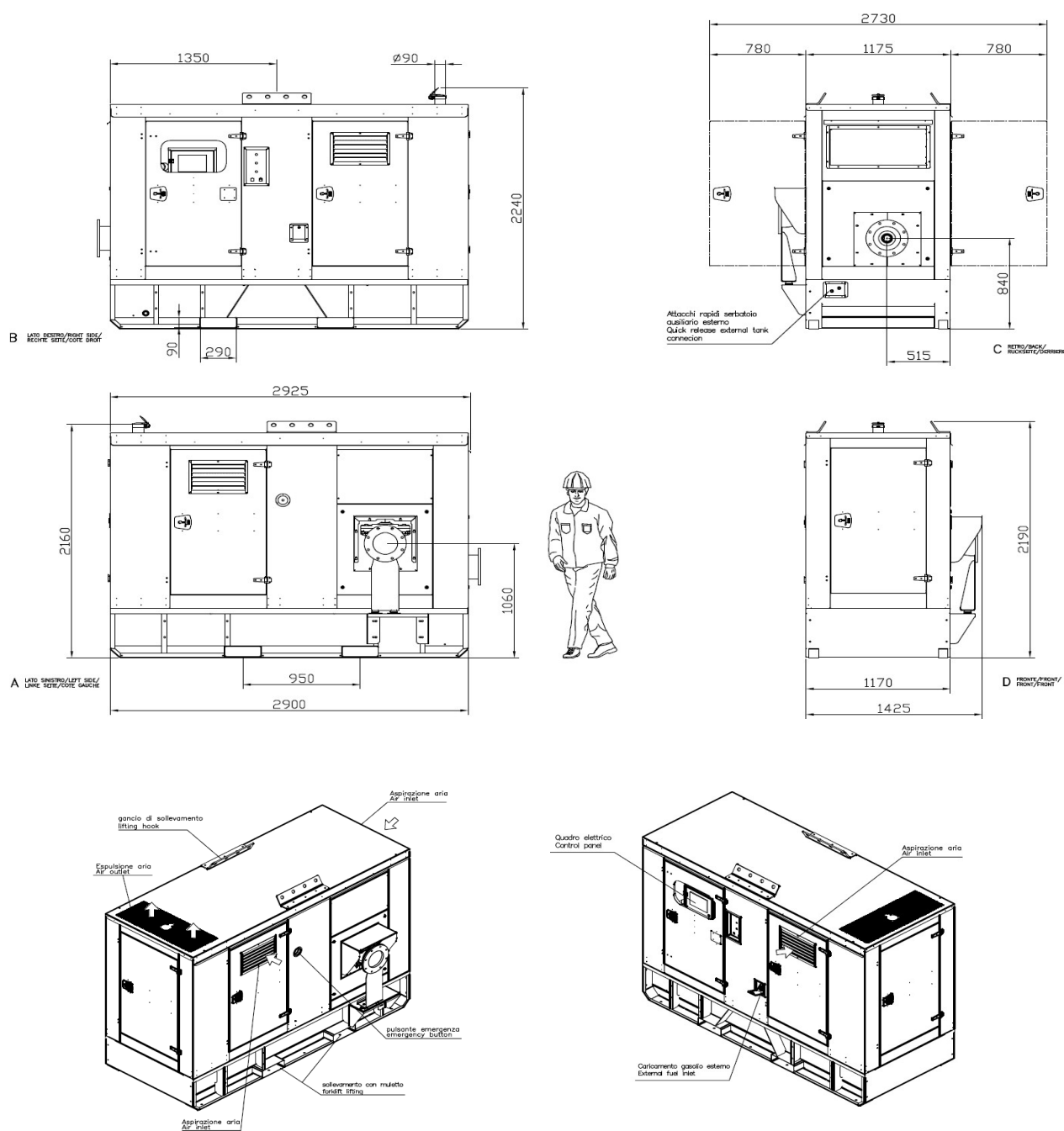
The data contained in this document is nominal and refers to the standard equipped model and is not binding. VISA S.p.A. reserves the right to revise the information without notice.

MULTI-SPEED PERFORMANCE CURVE

World-class performance: Using high efficiency pumps and top performance diesel engines, the Zeus Dry Prime units offer high performance and efficiency to ensure predictable and timely job completion with minimal operating expenses



The data contained in this document is nominal and refers to the standard equipped model and is not binding. Visa S.p.A. reserves the right to revise the information without notice.

PRELIMINARY DIMENSIONS

Nettuno motorpumps designed & built by VISA SPA • Complete in-house design & production

- Over 45 years of experience in the motorpumps sector
- In-house extensive testing facility
- Modern & functional design
- Durable materials
- Customizations available