

ONIS VISA Zeus Dry Prime

Model: MTZ.P34.SS

MODEL: Dewatering



ALL PICTURES SHOWN ARE FOR ILLUSTRATION PURPOSE ONLY

MAIN DATA

Max. flow	200 m³/hour
Max. Max head	28 mwc
Solids handling	35 mm
Suction connection	DN100 PN16
Delivery connection	DN100 PN16
Fuel tank	250 l.

DIMENSIONS AND WEIGHT

Width	1169 mm
Length	2386 mm
Height	1830 mm
Weight	1200 Kg (approx)

The **Zeus Dry Prime** range delivers fast dewatering solutions to sites where a power source is not available. Using a VISA pump featuring a 100% mechanical priming system, the Zeus Dry Prime motorpumps quickly prime and reprime, even from dry conditions.

PUMP



Brand VISA

Model HG100

Pump casing: Cast Iron G25

Impeller: Cast Iron GS500 - Type: Open 2 blades

Pump shaft: Stainless steel [39NiCrMo3]

Priming system: Mechanically Driven Diaphragm Style vacuum pump

Air removal capab.: 50 m³/h (30 cfm)

Float box: Single chamber with positive sealing air separation. Stainless steel float ball and linkage

Discharge Check Valve: Clapet

ENGINE



Brand PERKINS

Model 403D-15

Gross Power 25 kW @ 3000 rev/min

Displacement 1,5 l.

N° cylinders 3

Cooling system Water cooled

Exhaust emission Stage IIIA

CONTROL PANEL

Controller model NT5 by Nettuno



Auto start/stop system

Switch manual – 0 – Automatic

Tachometer

Hour counter

Warning lights “oil and engine temperature”

Warning light “auto stand-by”

GPRS – VISA Web supervisor & APP

Geolocation and Geo-fencing

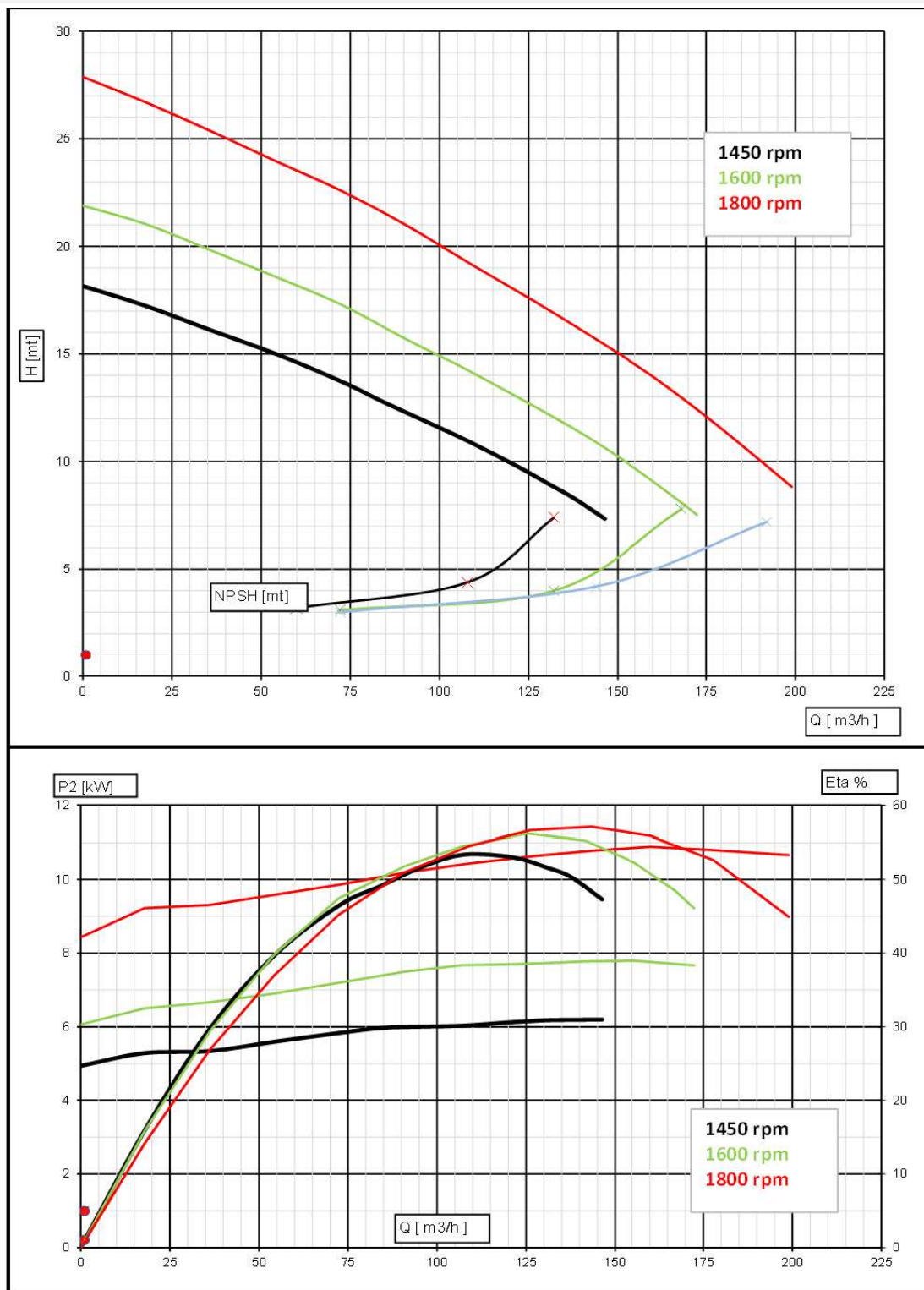
Soot / Ash filter control

Two float switches (min/max level) support for automatic operation

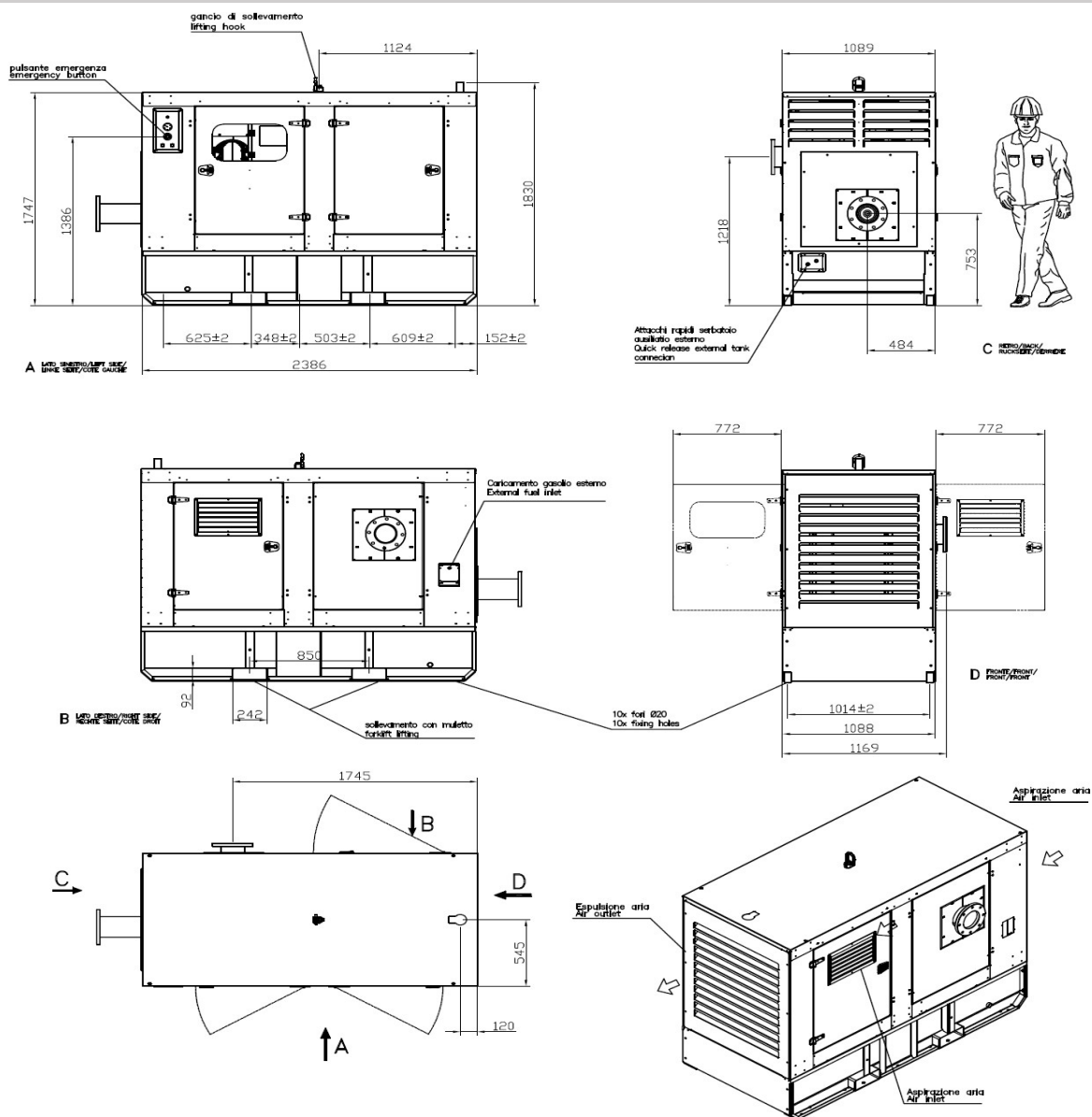
The data contained in this document is nominal and refers to the standard equipped model and is not binding. Visa S.p.A. reserves the right to revise the information without notice.

MULTI-SPEED PERFORMANCE CURVE

World-class performance: Using high efficiency pumps and top performance diesel engines, the Zeus Dry Prime units offer high performance and efficiency to ensure predictable and timely job completion with minimal operating expenses



The data contained in this document is nominal and refers to the standard equipped model and is not binding. Visa S.p.A. reserves the right to revise the information without notice.

DIMENSIONS


Nettuno motorpumps designed & built by VISA SPA • Complete in-house design & production

- Over 45 years of experience in the motorpumps sector
- In-house extensive testing facility
- Modern & functional design
- Durable materials
- Customizations available

The data contained in this document is nominal and refers to the standard equipped model and is not binding. VISA S.p.A. reserves the right to revise the information without notice.